

Servants for Sunday, January 13

Preacher/Liturgist

Rev. Peter Hoffman / Al Krodel

Acolytes & Cross Bearers

8:00 Raven Biebel & Alyssa Shriber

10:45 Anna & Sarah Boness

Chancel

8:00 Debby & Howard Springborn

10:45 Kim Pearce

Children's Message

8:00 Lesli Barron

Fellowship

TBD

Finance Assistant

TBD

Friendly Callers

Nancy Vargo & Nancy Abbattista

Greeters

8:00 Chris & Nancy Nelson

10:45 Kim & Chloe Pearce

Information Desk

TBD

Organist/Pianist

8:00 Ralph Gabrielson, Jr.

Readers

8:00 Tim Moran

10:45 Eileen Wendorf

Sound & Video

8:00 Finn Murray

Ushers

8:00 Andrew Auersch & Howard Springborn

10:45 Greg & Bonnie Randa

Worship Assistants

Al Krodel / Dan Anderson

Planning Ahead

Jan 7-Back to School

Jan 7-Stewardship Ministry Meeting

Jan 10-OWLS Luncheon

Jan 10-Prayer Team Meeting

Jan 10-Leadership Meeting

Jan 10-School Board Meeting

Jan 11-Christmas Pack Up

Jan 13-7/8th Confirmation

Jan 13-Community Prayer

Jan 14-Chancel Meeting

Jan 15-PALS Meeting

Jan 17-Ladies' Night Out

Jan 18-Pack 316 overnight

Jan 20-Food with Friends

Jan 21-School/Church Office Closed

Jan 21-Autumn Leaves Chapel

Jan 22-Financial Peace

Jan 27-7/8th Confirmation

Jan 28-1st Communion Class

Servants for Wednesday, January 16

Preacher/Liturgist

Rev. Peter Hoffman / Al Krodel

Acolyte

6:30 Xander Mosher

Chancel

6:30 TBD

Greeters

6:30 Chuck Granholm & Tony Abbattista

Organist/Pianist

6:30 Steve McGraw

Readers

6:30 Barb Cuyler

Sound & Video

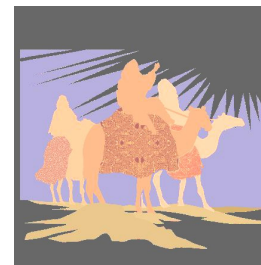
6:30 Doug Treftz

Ushers

6:30 Tim Scott & Chuck Granholm

Worship Assistants

Al Krodel / Dan Anderson



St. Luke's Lutheran Church Newsletter for the week of The Epiphany of Our Lord January 6, 2019

Regular Worship Services
Sundays, 8:00 & 10:45 AM
Sunday School & Bible Study
Sunday 9:30 AM
Wednesdays, 6:30 PM

Welcome to Worship!

Members and Visitors—Please complete the worship attendance cards in the pews and place them in the offering plates. If you are visiting with us, we welcome you! We hope to meet you at Fellowship time (Sunday, 9-9:25 am).

Lesson for this Weekend

Matthew 2:1-12

This Week at St. Luke's

Sunday, January 6

8:00-Traditional Worship (Sanctuary)

9:30-Adult Bible Study & Sunday School

10:45-Contemporary Worship (Sanctuary)

Monday, January 7

Culver's Night

6:00-Boy Scouts (Small Gym)

6:30-Girl Scouts (Classrooms)

6:30-Stewardship Meeting (MBussert Office)

7:00-Cub Scouts (FLC & Kitchen)

7:00-Mentoring Group III (Library)

Tuesday, January 8

1:00-Sr. Bible Study (Library)

6:30-Girl Scout Service Unit Meeting
(Classrooms)

7:00-Choir (Balcony)

8:00-Men's Basketball (FLC)

Wednesday, January 9

2:00-Newsletter Deadline

6:30 Worship

7:45-Prayer Meeting (Prayer Room)

Thursday, January 10

12:00-OWLS (Benny's, Oswego)

7:00-School Board Meeting (Library)

7:00-Leadership Meeting (TBD)

7:15-Prayer Meeting (IHOP)

Friday, January 11

6:00-Put Away Christmas decorations

(Sanctuary, Narthex, Gathering Area)

Saturday, January 12

7:30-Mentoring Group (Library)

3-6:00 Venture Scouts / FLC, Kitchen

6:00-PADS (FLC, Kitchen, Small Gym)

OWLS January Luncheon

The OWLS January luncheon will be Thursday, **January 10** at Noon. We will meet at Benny's in Oswego, and order from the menu. OWLS (Older Wiser Loving Seniors) is fellowship for all people ages 60 + or younger if you want to! Please sign up on the OWLS board! Any questions call Judy Bakalar at 630-554-2687.

Community Prayer at St. Lukes

A Community Prayer event will be held in the Sanctuary at St. Lukes on Sunday, January 13 at 6:30 pm.

Everyone is welcome!

Financial Peace University Starts January 22

Did you know... 70% of Americans live "paycheck to paycheck" – which means they have little or no back-up for job loss or another emergency?

And, the average American family has more than \$10,600 in credit-card debt. 45% of cardholders only make the minimum payment. *"The borrower is slave to the lender!" Proverbs 22:7.*

Would you like to get a better grip on your finances and learn how to make the most of your God-given resources? The average family who attends **Financial Peace University** eliminates \$5300 in debt and saves \$2700 during the class! The nine-session course will begin Tuesday, January 22 at 6:30 pm in the school Multi-Purpose Room. Call the church office to sign up! (630-892-9309, or chris.hansen@stlcfamily.org)

Scan here to make a contribution to St. Luke's from your mobile device.



63 Fernwood Road
Montgomery, IL 60538-2009
Church Phone: 630-892-9309
Fax: 630-892-0166
Email: churchoffice@stlcfamily.org
www.stlcfamily.org
School Phone: 630-892-0310

SUNDAY SCHOOL

Grades 1-6 will meet from 9:30-10:30 in the Small Gym; and will be taught by the team of Alyssa Harris, Chris Johnson, Chloe Pearce, Ruth Henning, Lisa Steinwart, and Michelle Steinwart

Pre-K & K will meet in the preschool room nearest the church mailroom; and be taught by Julia Kothera.

If you have questions, please contact Alyssa Harris at alyssalu.harris16@gmail.com or Lisa Steinwart at steinwart@aol.com

ADULT BIBLE STUDY

Men's Class (Church Library) - "The Journey Home" This 12-lesson study is written by Rev. Leroy Johnson and is based on Luke's "Parable of the Prodigal Son." Bob Cano will be our Facilitator. We are looking for more men to join the group! Any questions you have about the group or studies please contact Kevin Cuyler.

Adult Class (School Wing) - Begins on January 6 with "Stand for Christ"

This video bible study will cover the life of Rev. Richard Wurmbbrand, a Lutheran Romanian pastor imprisoned for his faith. It will be a study of how ordinary followers of Christ made a powerful impact for God's Kingdom while facing painful and seemingly impossible circumstances. Learn and grow with us as we seek to build up our own faith so that we will Stand For Christ and have a life-changing impact on our world! Call or email with your request for the participant's guide (\$3), and the full length book (\$5) to make sure you have a copy for the first session. Phone 630-554-2939 or eieio21@aol.com

(This class is for mature adults due to the graphic nature of some video content.)

"Senior" Bible Study

Senior Bible Study meets the 2nd and 4th Tuesdays of each month at 1:00 pm in the Church Library. Please feel free to join us even if you are not a "senior"! If you have time during the day and need a friendly group to study with then this is the group! If you have any questions, please contact Pat Freeman or Nancy Vargo.

St. Luke's Christian Academy Teacher Opening

The following position is available:

- **Substitute teacher** for preschool through 8th grade. Qualified applicants must have a bachelor's degree.

Please submit applications and references to the St. Luke's Christian Academy office, email to the academy office at tamimcgraw@stlcschool.com. Contact the academy office at 630-892-9309 ext. 2 for more information.

Focus on the Family

Please pick up your **January Focus on the Family** Bulletin at the Information Desk in the Narthex. As always, great info on parenting and fun ideas for your family! This month—Seasoned with Grace!



"Basically, we're looking for an innovative pastor with a fresh vision who will inspire our church to remain exactly the same."

With Pastor Hoffman due to retire next spring, many of you are probably wondering about the status of the call process for the next pastor of St. Luke's. Members of the Leadership Council have been meeting with Pastor Keith Haney, Mission Facilitator for our Northern Illinois District, who will be helping us through this process.

According to Pastor Haney, the cartoon above sums up where so many congregations begin the call process. How can we call a pastor with tons of personality, who inspires us with great sermons and Bible studies, attracts lots of young families, and increases our numbers of people in the pews and dollars in the offering plate? Now find us a pastor who can do all of this without fundamentally changing anything about us. When churches enter this transitional phase in the life of the church, they do so with much fear, apprehension, and uncertainty. With all those emotions flowing through the congregation, it is no wonder they want to play it safe. They know things will be different from before, so the tendency is to find a Shepherd, who will lead them into this new reality but in a way that does not upset the apple cart too much. So how do we call a pastor that is right for what God will do in the congregation moving forward?

Jesus teaches us that preparation is essential in Luke 14:28 he says, *"Just imagine that you want to build a tower. Wouldn't you first sit down and estimate the cost to be sure you have enough to finish what you start?"*

St. Luke's is about to embark on a decision that will affect how God's mission is carried out among His people in this community. Therefore, wouldn't it make sense to consider prayerfully what God's will is for our community of believers? One method to accomplish this goal is through a congregational self-study that will give us a chance to examine St. Luke's ministry direction, programs, and address any problems needing to be addressed. It affords the leadership an opportunity to really ask the tough questions, and will help St. Luke's discover what type of shepherd this congregation will need to begin the next chapter in its ministry story in Boulder Hill, Montgomery, Oswego, and beyond.

With Pastor Haney's help, Leadership will be conducting a congregational self-study in January, following the holiday season. Leadership hopes and prays that as many members of this congregation as possible participate. Watch for more details and information that will be forthcoming as the time for the study approaches.

*Thanks to all of you, and God Bless,
St. Luke's Leadership Council*